

**Workshop  
February 23, 2023  
6:00 pm  
City Hall**

	<b>Pages</b>
<b>1. Fire Department</b>	
<b>2. Water/Sewer</b>	<b>2-14</b>
<b>3. Police</b>	<b>15</b>
<b>4. Street</b>	
<b>a. ADA Project</b>	<b>16</b>
<b>b. Curb Replacement</b>	<b>17</b>
<b>c. Mill &amp; Overlay</b>	<b>18</b>
<b>d. Chip &amp; Seal Shoot 1 of 2</b>	<b>19</b>
<b>e. 12<sup>th</sup> Road &amp; Keystone Planning</b>	
<b>5. Parks/Cemetery</b>	<b>20-28</b>

# **2023 Projects**

## **Water Projects**

- S. 8<sup>th</sup> St. water main replacement
- Elm St. water main replacement, from 8<sup>th</sup> St. to 10<sup>th</sup> St.
- Install 2 valves at 14<sup>th</sup> & Oak
- Install 2 valves at 15<sup>th</sup> & oak
- Loop water main on Jackson St. from S. 13<sup>th</sup> to S. 14<sup>th</sup>
- Replace fire hydrant at 13<sup>th</sup> & Jackson
- Drain and visually inspect both elevated water towers
- Power wash all three water tanks, both elevated and the ground storage at the water plant
- Continue water meter change outs
- Continue working on the meter pit installation list
- Various water leak repairs during the year

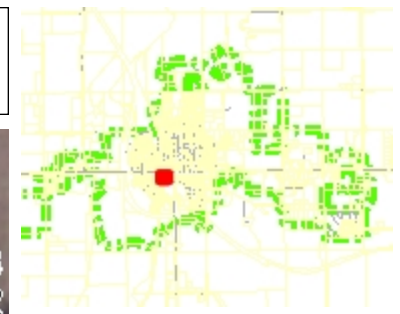
## **Sanitary Sewer Projects**

- Manhole installation project on Center St.
- Flush Tank and cleanout replacement project
- Entire lagoon project
- Line replacement or repair in the 1900 block of Center St. (By KDOT)

## **Storm Sewer Projects**

- Replace or repair between 14<sup>th</sup> St. and 15<sup>th</sup> St. including, Carolina St., alley North of Nordhus Motors, Center St. & Broadway
- Extend the culvert at PS #6, (Hartley Ridge)
- Install storm drain at 7<sup>th</sup> & Jackson by the bus barn

# Marysville, KS

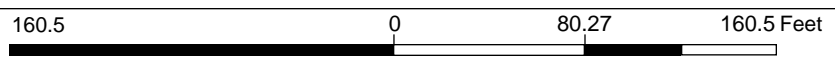


**Legend**

- Valves
- Hydrants
- Cleanouts
- Line Point
- Meters
- Pit
- Sprinkler POD
- Towers
- Water Treatment Plant
- Wells
- Service Lines
- Water Mains
- Parcel
- Roads

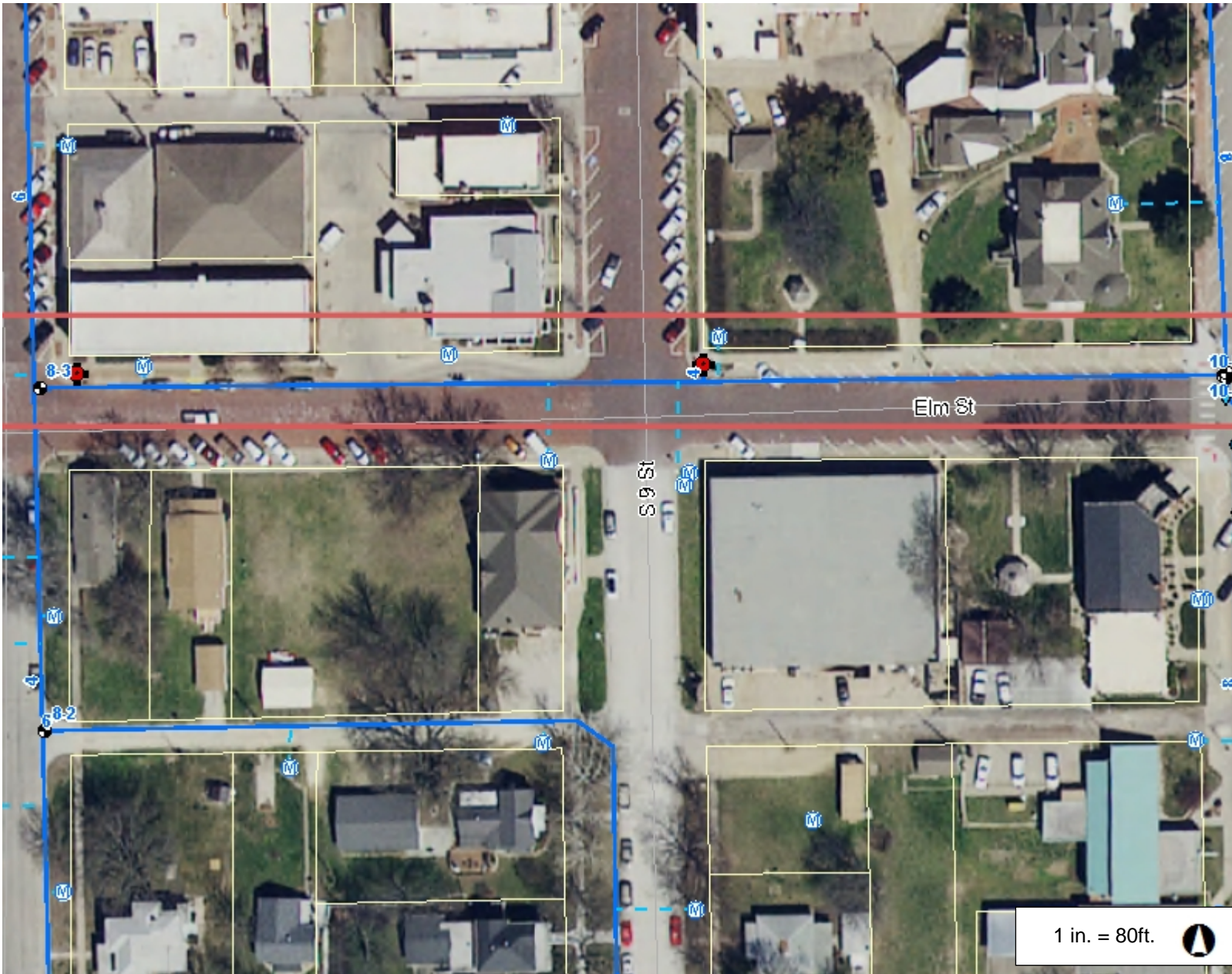
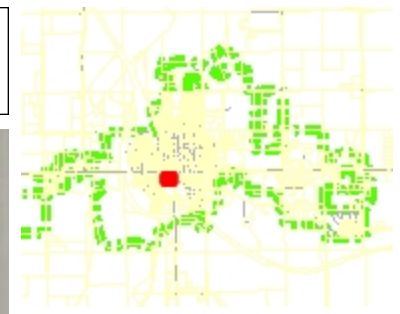
**Notes**

1 in. = 80ft.



This Cadastral Map is for informational purposes only. It does not purport to represent a property boundary survey of the parcels shown and shall not be used for conveyances or the establishment of property boundaries.

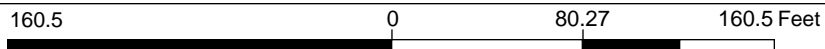
# Marysville, KS



### Legend

- Valves
- Hydrants
- Cleanouts
- Line Point
- Meters
- Pit
- Sprinkler POD
- Towers
- Water Treatment Plant
- Wells
- Service Lines
- Water Mains
- Parcel
- Roads

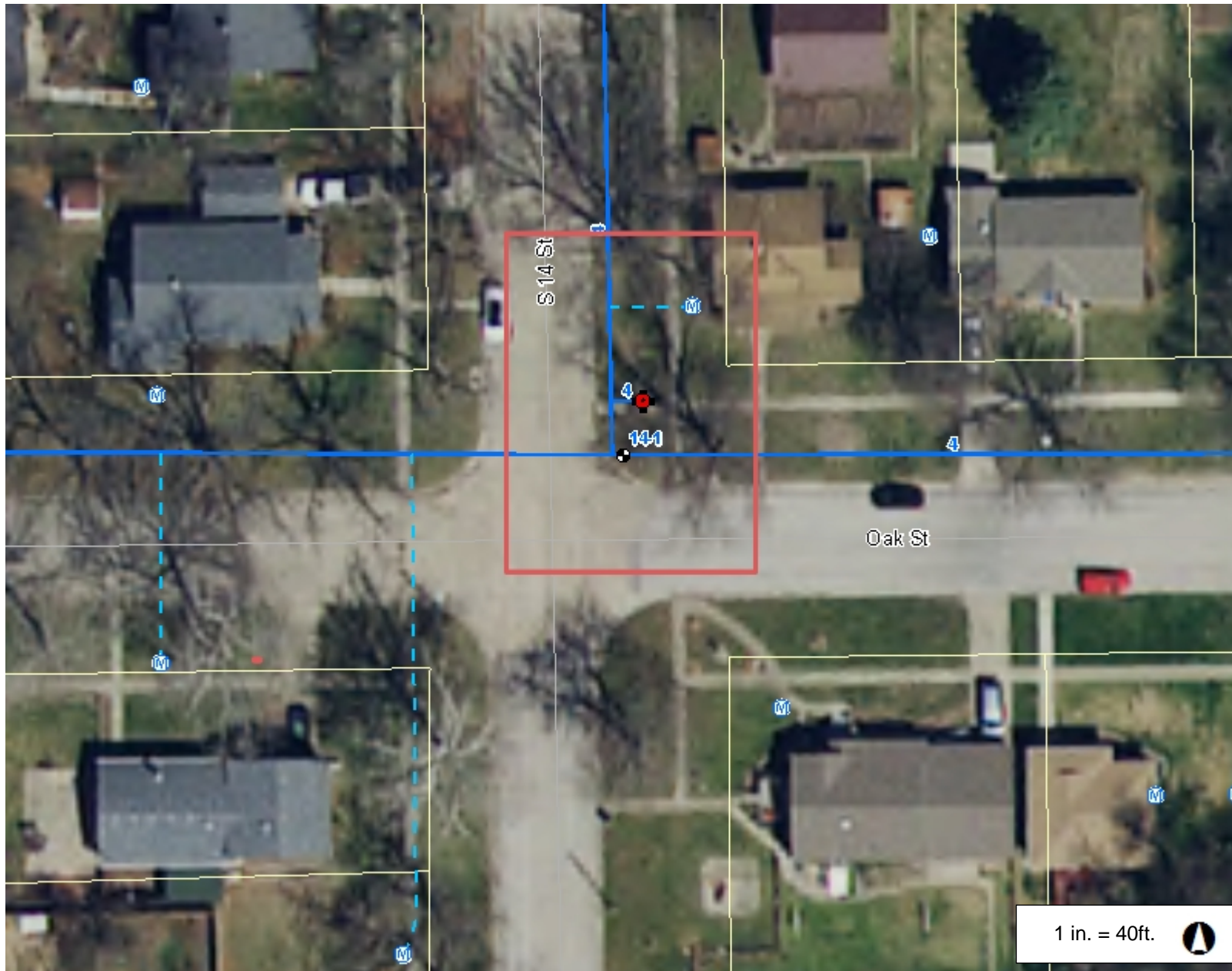
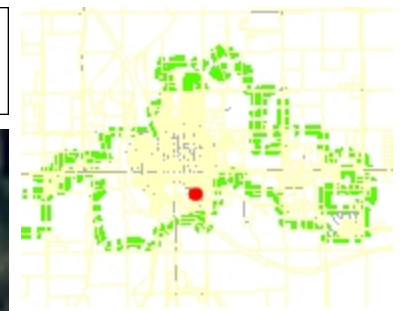
1 in. = 80ft.



This Cadastral Map is for informational purposes only. It does not purport to represent a property boundary survey of the parcels shown and shall not be used for conveyances or the establishment of property boundaries.

### Notes

# Marysville, KS



## Legend

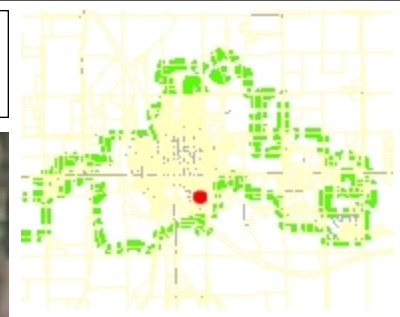
- Valves
- Hydrants
- Cleanouts
- Line Point
- Meters
- Pit
- Sprinkler POD
- Towers
- Water Treatment Plant
- Wells
- Service Lines
- Water Mains
- Parcel
- Roads

## Notes

80.3      0      40.13      80.3 Feet

This Cadastral Map is for informational purposes only. It does not purport to represent a property boundary survey of the parcels shown and shall not be used for conveyances or the establishment of property boundaries.

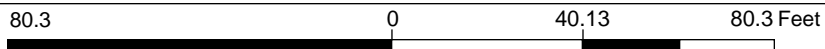
# Marysville, KS



## Legend

- Valves
- Hydrants
- Cleanouts
- Line Point
- Meters
- Pit
- Sprinkler POD
- Towers
- Water Treatment Plant
- Wells
- Service Lines
- Water Mains
- Parcel
- Roads

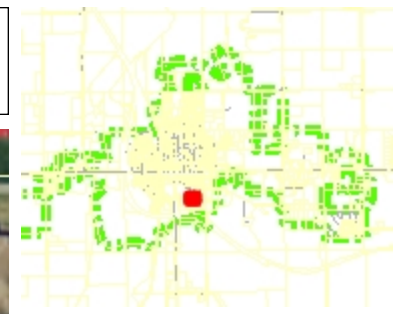
1 in. = 40ft.



This Cadastral Map is for informational purposes only. It does not purport to represent a property boundary survey of the parcels shown and shall not be used for conveyances or the establishment of property boundaries.

## Notes

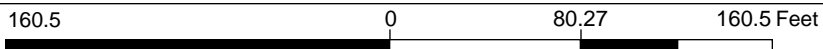
# Marysville, KS



### Legend

- Valves
- Hydrants
- Cleanouts
- Line Point
- Meters
- Pit
- Sprinkler POD
- Towers
- Water Treatment Plant
- Wells
- Service Lines
- Water Mains
- Parcel
- Roads

1 in. = 80ft.



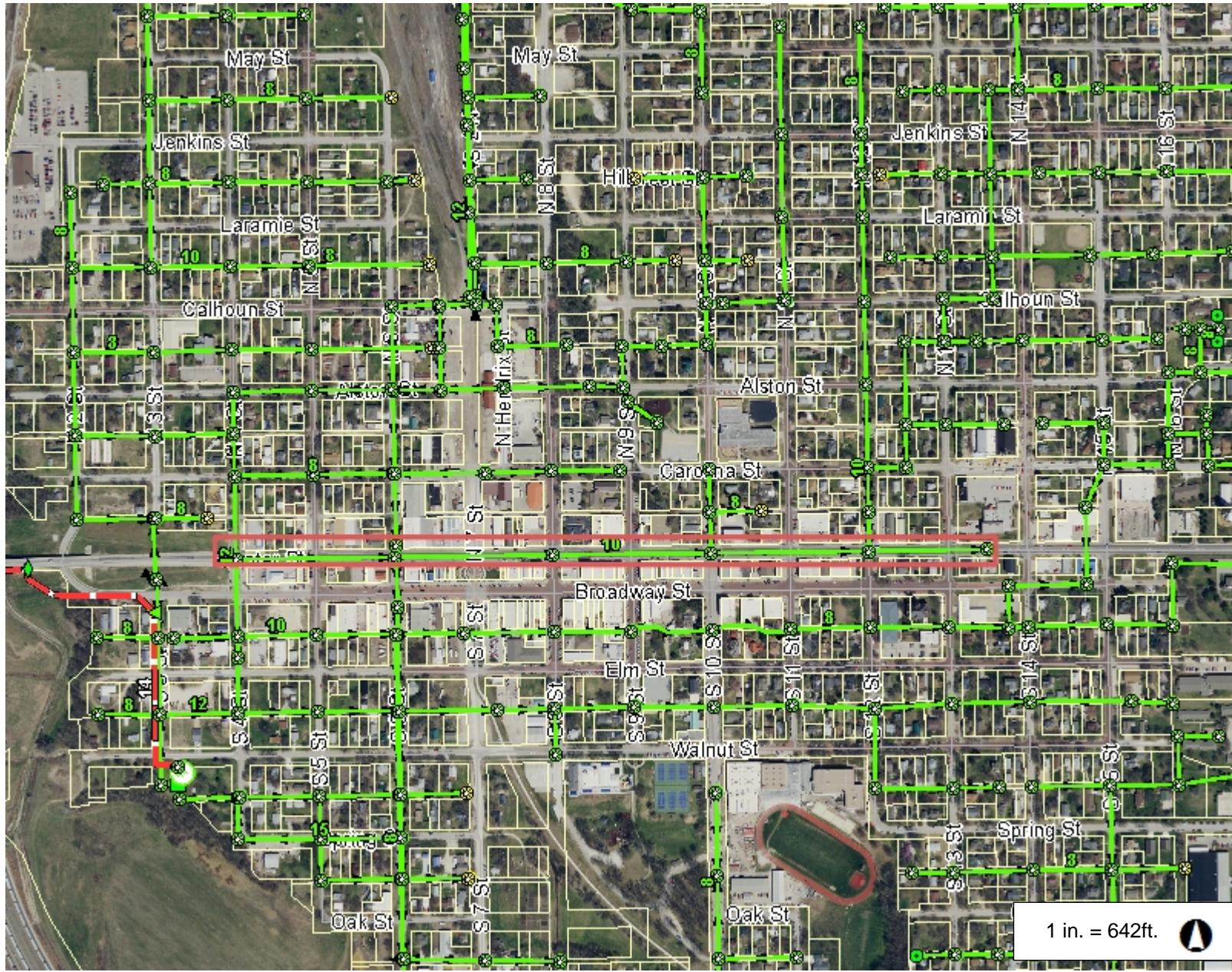
This Cadastral Map is for informational purposes only. It does not purport to represent a property boundary survey of the parcels shown and shall not be used for conveyances or the establishment of property boundaries.

### Notes



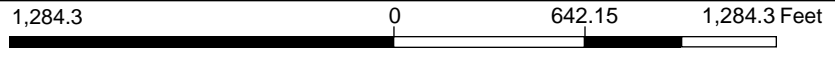


# Marysville, KS



- ### Legend
- Manhole
  - Flush Tank
  - Force Main Valve
  - Generator
  - Air Release Valve
  - Control Structures
  - Sewer Cleanouts
  - Sewer Line Points
  - Lift Stations
  - Grinder Pump
  - Wet Well
  - Force Main
  - Grinder Pump Lines
  - Gravity Main
  - Service Line
  - Parcel
  - Roads

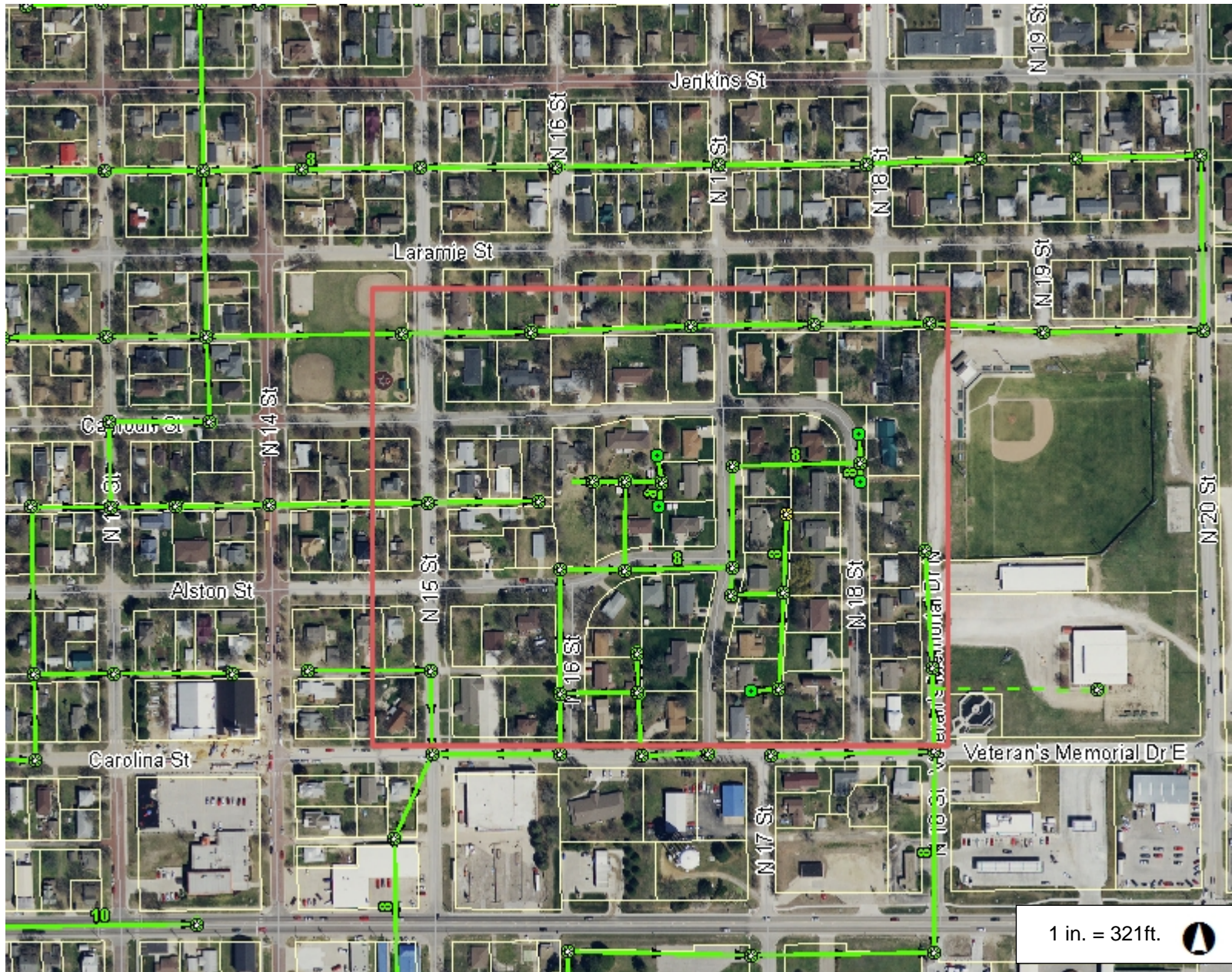
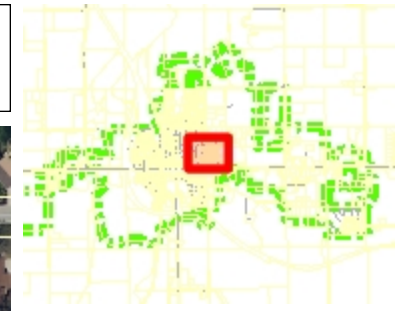
1 in. = 642ft.



This Cadastral Map is for informational purposes only. It does not purport to represent a property boundary survey of the parcels shown and shall not be used for conveyances or the establishment of property boundaries.

### Notes

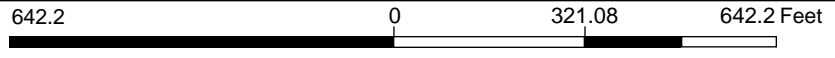
# Marysville, KS



### Legend

- Manhole
- Flush Tank
- Force Main Valve
- Generator
- Air Release Valve
- Control Structures
- Sewer Cleanouts
- Sewer Line Points
- Lift Stations
- Grinder Pump
- Wet Well
- Force Main
- Grinder Pump Lines
- Gravity Main
- Service Line
- Parcel
- Roads

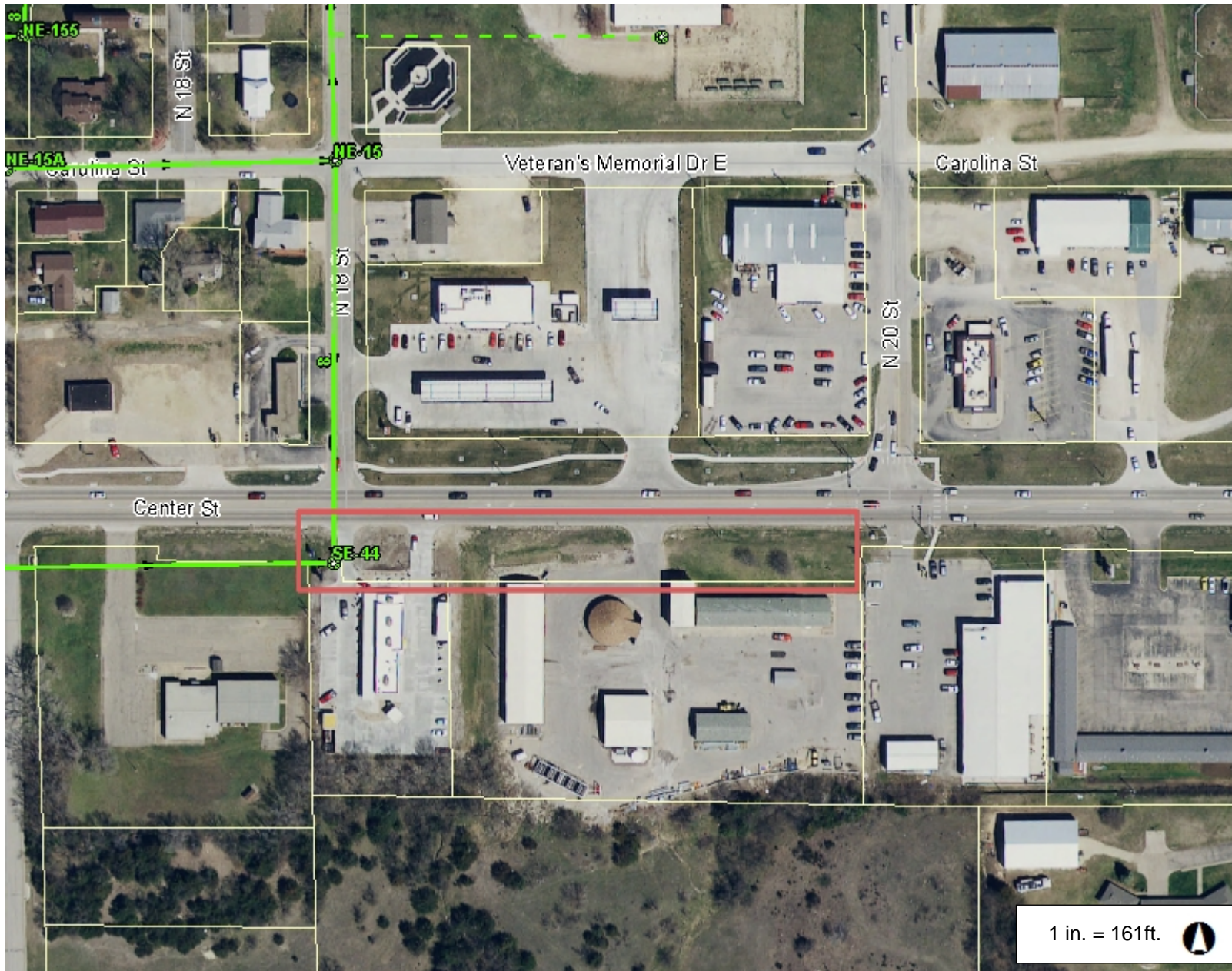
1 in. = 321ft.



This Cadastral Map is for informational purposes only. It does not purport to represent a property boundary survey of the parcels shown and shall not be used for conveyances or the establishment of property boundaries.

### Notes

# Marysville, KS



## Legend

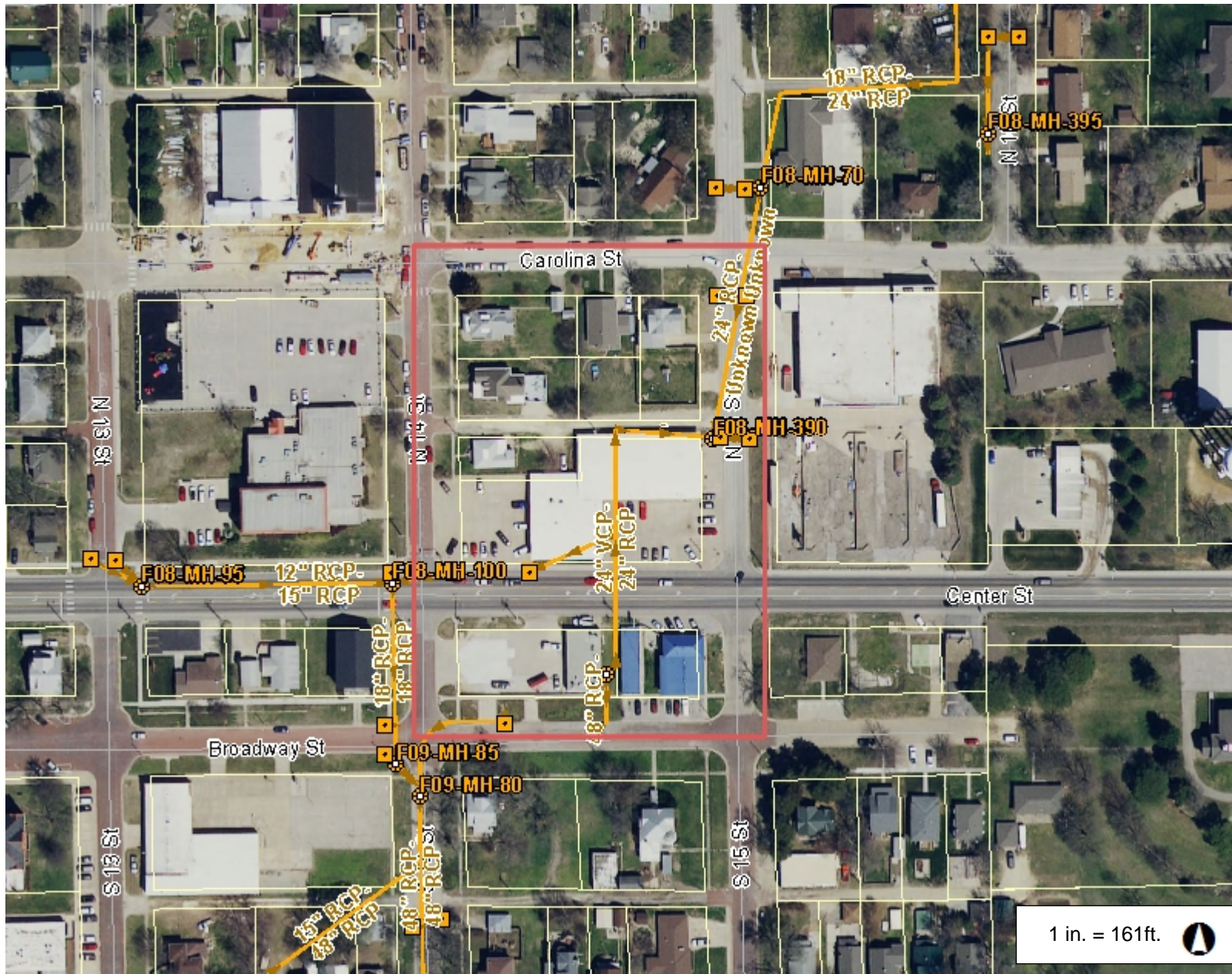
- Manhole
- Flush Tank
- Force Main Valve
- Generator
- Air Release Valve
- Control Structures
- Sewer Cleanouts
- Sewer Line Points
- Lift Stations
- Grinder Pump
- Wet Well
- Force Main
- Grinder Pump Lines
- Gravity Main
- Service Line
- Parcel
- Roads

## Notes

321.1 0 160.54 321.1 Feet

This Cadastral Map is for informational purposes only. It does not purport to represent a property boundary survey of the parcels shown and shall not be used for conveyances or the establishment of property boundaries.

# Marysville, KS



## Legend

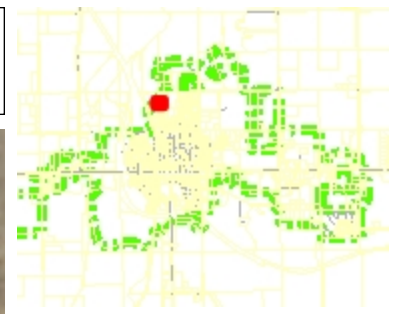
- Inlet
- Storm Manhole
- Outfall
- Culvert Point
- Storm Gravity Main
- Open Drain
- Retention Pond
- Parcel
- Roads

## Notes

321.1                      0                      160.54                      321.1 Feet

This Cadastral Map is for informational purposes only. It does not purport to represent a property boundary survey of the parcels shown and shall not be used for conveyances or the establishment of property boundaries.

# Marysville, KS



## Legend

- Inlet
- ⊙ Storm Manhole
- ▲ Outfall
- ⬠ Culvert Point
- Storm Gravity Main
- ▬ Open Drain
- Retention Pond
- Parcel
- Roads

1 in. = 80ft.

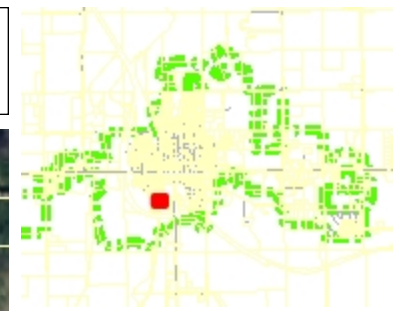


160.5 0 80.27 160.5 Feet

This Cadastral Map is for informational purposes only. It does not purport to represent a property boundary survey of the parcels shown and shall not be used for conveyances or the establishment of property boundaries.

## Notes

# Marysville, KS



## Legend

- Inlet
- Storm Manhole
- Outfall
- Culvert Point
- Storm Gravity Main
- Open Drain
- Retention Pond
- Parcel
- Roads

## Notes

160.5 0 80.27 160.5 Feet

This Cadastral Map is for informational purposes only. It does not purport to represent a property boundary survey of the parcels shown and shall not be used for conveyances or the establishment of property boundaries.

**February 23<sup>rd</sup> Capital Outlay Project Meeting – Police Department**

2022 Project:

1. Bathroom remodel – this project is nearing the end. As of February 16th, they have installed the toilet and dryer. The bracket to connect the washer and dryer will be here Saturday. They are scheduled to be here on Thursday, February 15<sup>th</sup> to install the shower trim, and entry door and trim finish. That leaves remaining: install lockers, finish electrical, and install exterior siding on the West side of the building. This project should be complete within the next two weeks on or about March 1.

2023 Projects:

1. Vehicle purchases – both vehicles have been ordered and are estimated to be 45-60 days out. They will then be sent to KA-COMM for upfitting for approximately two weeks.
2. Conference table – we are exploring options to purchase a conference table that has built in power outlets. We looked at available options through Uline. This should be ordered and completed in the coming weeks.
3. Animal control upgrades – as soon as the weather turns warmer, Chief Simpson will be touring a couple animal shelters at other law enforcement agencies in the area to see the best course of action to upgrade our current facility. Our major intent is to install some type of heating system for inclement weather with the possibility of future upgrades as well.
4. Secondary weapons – we look to order them in the coming weeks as well. We are planning to get our Rural Violent Crime Reduction grant squared away, then follow each of the aforementioned projects above to completion.

# Marysville Street Dept

## ADA Project list 2022

13 <sup>th</sup> Alston	Northeast corner	1
	Northwest corner	1
11 <sup>th</sup> Alston	Northwest corner	2
	Southwest corner	2
8 <sup>th</sup> Alston	Northwest corner	1
	Southwest corner	2
	Northeast corner	1
	Southeast corner	2
6 <sup>th</sup> Alston	Northeast corner	1
	Southeast corner	2
	Northwest corner	2
5 <sup>th</sup> Alston	Southeast corner	2
	Northwest corner	2
4 <sup>th</sup> Alston	Southeast corner	2
3 <sup>rd</sup> Alston	Southeast corner	2
	Northwest corner	1
	Southwest corner	1
2 <sup>nd</sup> Alston	Northeast corner	1
	Northwest corner	2
	Southwest corner	2



# Marysville Street Dept.

## 2023 Curb replacement program list

Approx. 1000 feet

1. Broadway 10<sup>th</sup> to 11<sup>th</sup> (South side)

263----- Feet

2. Jenkins 19<sup>th</sup> to 20<sup>th</sup> (North side)

345----- Feet

3. Walnut 12<sup>th</sup> to 13<sup>th</sup> (North side)

257----- Feet

4. S. 15<sup>th</sup> Elm south ½ block (West side)

134----- Feet

Total 999 feet

# Marysville street Department

## Edge mill & Asphalt overlay 2023

1. N 9<sup>th</sup> Street from the N side of Calhoun to Jenkins  
approx. 655 feet

2. Elm street 3<sup>rd</sup> to 4<sup>th</sup> Approx. 298 feet

Total approx. feet 953 feet or 3.176 blocks

# Marysville Street Dept.

## 2023 Seal List

### Shoot #1

3 <sup>rd</sup> Broadway to Jenkins on 2 <sup>nd</sup> street	8.49 blocks
May 15 <sup>th</sup> to 18 <sup>th</sup>	3.27 blocks
Debbie lane 14 <sup>th</sup> to 12 <sup>th</sup>	2.29 blocks
Park place 16 <sup>th</sup> – Debbie Lane	2.95 blocks

-----

17 Blocks

Shoot # 2 Approx 17 blocks. Has not been chosen yet as we are waiting for the winter to end to see what damage we acquired from the freeze / thaw cycles.

## **Cemetery/Parks Projects for 2023**

Listed below are some of the projects we want to work on in 2023 most of which we plan on doing ourselves:

1. Set lot pins in the cemetery (Sections G, K, and R).
2. Have CES set block corner pins in section S.
3. Put a hose reel and new longer hose on the New Holland tractor.
4. Pour a pad north of our lower shop and move the old shed at the dump for more storage.
5. Paint the shelters and possibly the picnic tables at Lions park.
6. Paint the Bommer School house.
7. Stain the wood structures and fence around the city park playground.
8. Purchase two new mowers for in the stones at the cemetery.
9. Add rubber to playground areas as needed (we have two bags left).
10. Burn the levee.
11. Spray the levee.
12. Put up a new directory at the cemetery.
13. Fix leaking irrigation valves in the parks and 7<sup>th</sup> street corridor.
14. Plant buffalo grass at City hall and possibly some other small areas.
15. Work on the north fence line of the dump.
16. Clean trees and brush in the back (east side) of Lions park.
17. Build and install a riser for the net behind the bleachers on the red diamond at Lakeview.
18. Install more poles for nets at Lakeview.
19. Plant grass on the slope on the northwest corner of the pool.
20. Put in two new dog waste stations one at Lions park one at Dargatz park.

In addition to these projects we also have some bigger projects planned that we plan on hiring out.

### **New Directory at the Cemetery**

Last June the tornado took out our old wooden directory board at the city cemetery. Before this happened, Schurle Sign company in Riley, KS had put up a sign honoring veterans directly west of our old sign. This sign is metal and is drilled into the ground about three feet deep and filled in with concrete. This sign held up to the winds we had in June. I have been in contact with Schurle Sign and we went over several options to replace the old directory.

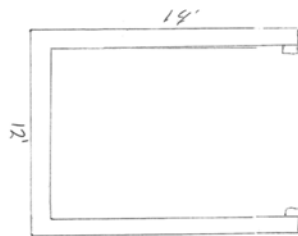
- 1.) The first idea is to put another sign up exactly like the veteran's sign where our old sign was. This is my top preference because we have room for it, and it makes the most sense to put it in the front of the cemetery where almost everyone enters (the main gate). The old directory had a 4'x8' area for names and we were getting close to

running out of room. The new directory would have a 5'x10' area to put names and would gain us at least 75 years' worth of name space based on 50 new names per year (which is on the high end). The salesman did not have any blueprints or cost yet but it would look exactly like the other sign except with a locking, weatherproof front and back. He did say a good ballpark figure would be \$20,000-\$22,000.

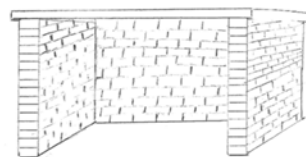
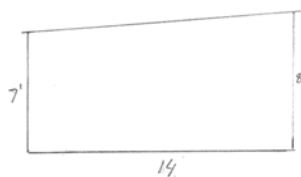


Current Veterans sign

- 2.) Another idea was to have is to construct a three-sided building with a roof over it. This could possibly go in the same are as the above idea depending on size. A couple of years ago Will got a bid from Hartmann Masonry in Council Grove.

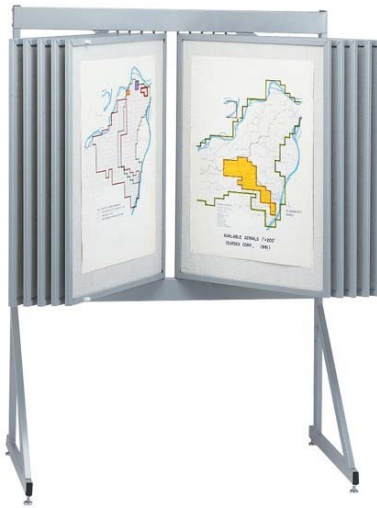


Design #2



Based on the above picture the opening of this building would have to face south in the area we have allotted in the front of the cemetery. The cost in 2020 for this building was \$33,000 and did not include the concrete roof or the pad it would sit on.

- 3.) We also have had a few people show interest in putting something in the chapel on the north end of the cemetery. One option is to have a poster sign board with several pages to flip through, kind of like how some high schools have their graduation classes from previous years. I don't have a figure from Schurle sign yet but looking at some similar plans online you can spend anywhere from \$2,000 - \$5,000 depending on number of pages. The ones I found were 40" tall by 30" wide and if they were double sided would account for over 200 years' worth of new names. Or we could make the font larger and still have plenty of room for many more years. This would need to be in the chapel to keep the pages from getting destroyed by the wind.



One example of a poster sign board

- 4.) A final option is to have a digital system put on a computer. This would also have to be in the chapel since it would be out of the weather and it is the only spot that we have electricity available. I do not have a cost figured out for this option yet. The city could supply the computer, but the salesman said you might need some type of program with internet capability to have this option, which would include a monthly fee. With this option and the flipping poster board in the chapel would mean we have to clean out the chapel. Right now, the chapel is being used to store the Memorial Day crosses (approx. 750 crosses) and some other things we use at the cemetery. We are currently building a cross trailer to transport all the crosses and plan on storing them in Hedstrom hall if necessary. With the other items in the chapel and our need to store all of our current and future equipment we would look into adding on to our shop at the cemetery if we

decided to use the chapel to store our directory. We would also need to put some type of sign near the main entrance directing people to the chapel to find the new directory.

### **New Bathrooms at City Park**

Another main goal I would like to see is to tear down the old bathrooms at the city park and replace them. The current bathrooms are very old and the main issue we have is the toilets are very difficult to flush, usually leaving a mess to clean up on a daily basis, and Mother's Day can often turn into a nightmare. Below is a sketch of the interior dimensions of the current bathroom. I do NOT want to go any bigger than this or move the bathrooms north to accommodate for parking in front. There is rarely a need to park more than a couple of cars in front of the bathrooms. I have contacted Inline construction to get an estimate on cost. To remove the old bathrooms and replace has an estimate of \$120,000 (estimate below). We went over some ideas and decided a block building with a flat concrete roof and a normal pitched roof with shingles and an overhang on top of the flat roof would be simple to build, look nice (similar to the blocks on the pool building), easy to clean, and could double as a storm shelter. The bathroom would have three stalls on each side and a sink and hand dryer, just like the current bathroom. We also decided on an epoxy floor for ease of maintenance, like the new floor we had put in the airport building. We do not want or see the need to have heat or showers in this building. We feel it would only lead to more maintenance/cleaning issues and most campers that stay here already have full bathrooms in their RV.



ESTIMATE

Customer Name: City of Marysville- City Park Restroom Facility

Date: 2/16/2023

**Job Description**

Remove and replace City Park Restroom Facility

We hereby propose to furnish material and labor - complete, in accordance with, above specifications for the sum of: one hundred and twenty thousand dollars and zero cents (\$120,000.00)

**Payment to be made as follows:**

**Materials:** The materials of a job will be paid in full at the time of delivery. **Concrete:** Any concrete and concrete materials must be paid in full upon its completion. **Labor & Miscellaneous Expenses:** Labor and miscellaneous expenses will be paid in full upon job completion. All bills must be paid within 7 days of receipt of invoice or statement. Any unpaid balance after the 7 days will be assessed late fees.

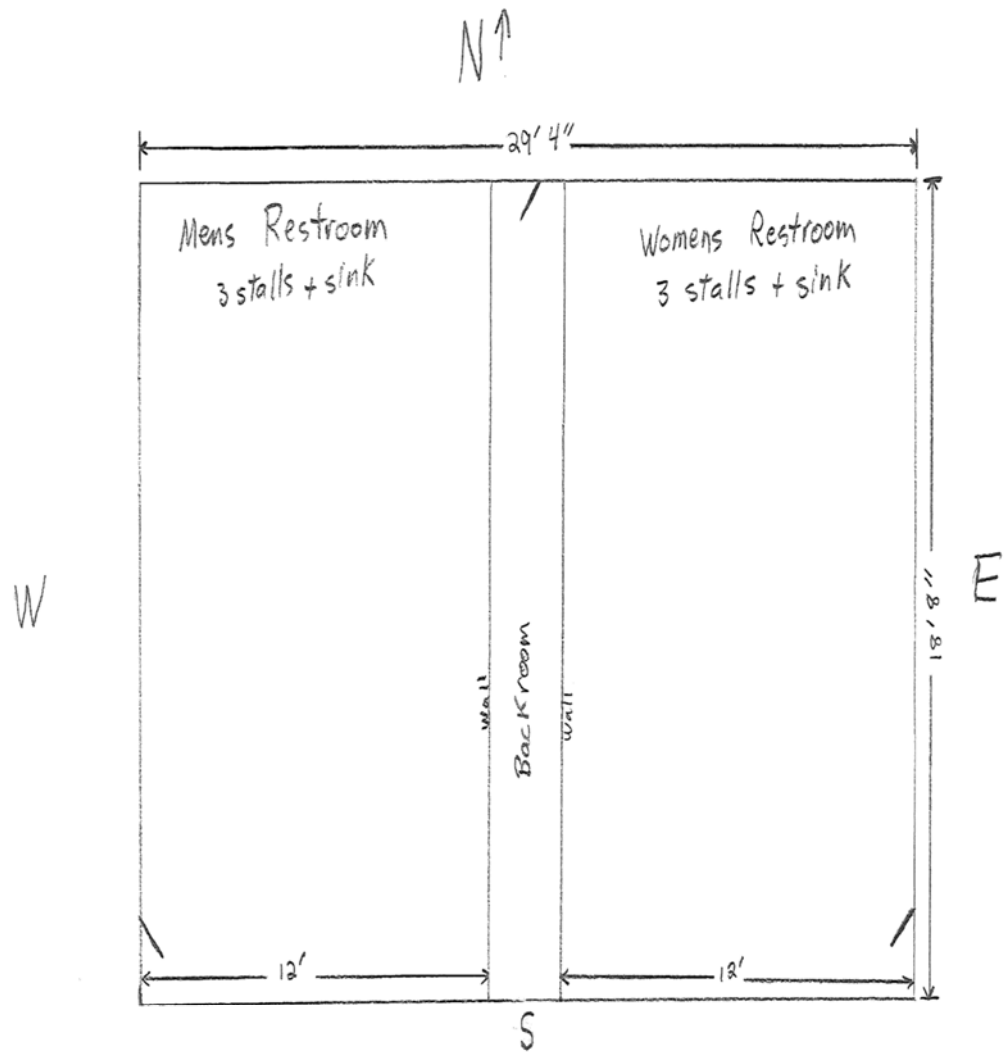
All Material is guaranteed to be as specified. All work to be completed in a workmanlike manner according to standard practices. Any alteration or deviation from above specifications involving extra costs will be executed only upon written orders, and will become an extra charge over and above the estimate. All agreements are contingent upon strikes, accidents, or delays beyond our control. Owner is to carry fire, tornado, and other necessary insurance. Our workers are fully covered by Workman's Compensation Insurance.

**Acceptance of Proposal**

The above prices, specifications and conditions are satisfactory and are hereby accepted this \_\_\_\_\_ day of \_\_\_\_\_, 2023.

Customer Signature: \_\_\_\_\_ Company Representative: \_\_\_\_\_





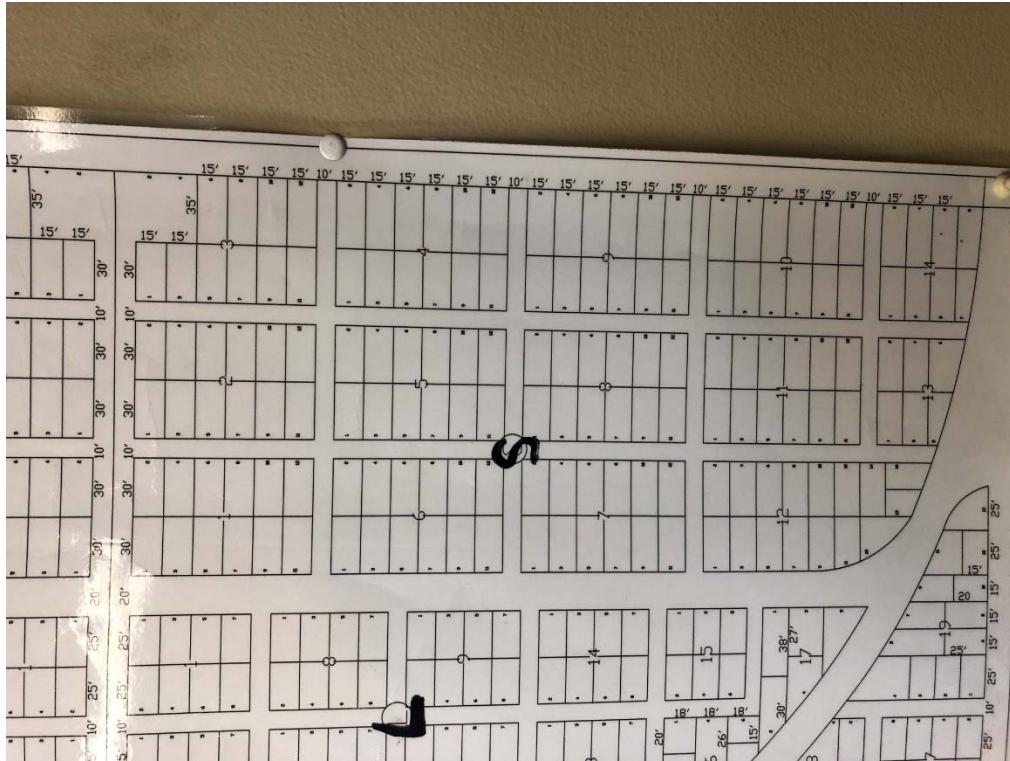
City Park Bathrooms  
(Inside dimensions)

Road

**Cemetery block corners located (Section S)**

Several years ago, Dale had CES locate the block corners in section R of the cemetery. This makes it much easier to find out where individual lots are so we can minimize burial mistakes or questions in the future. It will also help us to know more exactly what lots to be

reserved for the Memorial Day crosses. The cost for this project is \$2,090. I will probably see if CES can do it this summer when it is easier to drive pins in the ground.



### **Cemetery Shop addition (possibly in the future)**

If we do decide to put the cemetery directory in the chapel, we will need more room to put all of the items we have stored in it now. We also would like to have the ability to put all of our trucks and tractors in storage and not out in the weather all year. Below is a drawing of our current shop and two possible additions going to the north. I talked to Inline construction about this project as well and right now they had the cost at roughly \$50 per square foot. This includes a concrete floor and insulated roof with a 2x6 stick built shed. One difference in cost would be in spray foam insulation being possibly \$10,000 more but it has the highest R value and would also help tie the structure together for added strength. We also may need to add another heating source for the addition, most likely ceiling tube heat like in the street shop. Below are two options 50'x35' (\$97,500 approx.) and 50'x60' (\$160,000 approx.) both options include the extra price for sprayed foam insulation. The building would have tin sides and roof with gutters. We also thought about putting a floor lift somewhere in the new addition to make vehicle and mower maintenance easier. This would have an added cost obviously. We can discuss other options at the meeting as well including a metal building instead of stick built and the cost of that option.



ESTIMATE

Customer Name: City of Marysville- Cemetary Shop

Date: 2/16/2023

**Job Description**

Addition for stud framed building

- Approximately 3,000 sq. ft. of building addition to existing city shop building at \$50 per sq. ft.

We hereby propose to furnish material and labor - complete, in accordance with, above specifications for the sum of: one hundred and fifty thousand dollars and zero cents. (\$150,000.00)

---

**Payment to be made as follows:**

Materials: The materials of a job will be paid in full at the time of delivery. Concrete: Any concrete and concrete materials must be paid in full upon its completion. Labor & Miscellaneous Expenses: Labor and miscellaneous expenses will be paid in full upon job completion. All bills must be paid within 7 days of receipt of invoice or statement. Any unpaid balance after the 7 days will be assessed late fees.

All Material is guaranteed to be as specified. All work to be completed in a workmanlike manner according to standard practices. Any alteration or deviation from above specifications involving extra costs will be executed only upon written orders, and will become an extra charge over and above the estimate. All agreements are contingent upon strikes, accidents, or delays beyond our control. Owner is to carry fire, tornado, and other necessary insurance. Our workers are fully covered by Workman's Compensation Insurance.

---

**Acceptance of Proposal**

The above prices, specifications and conditions are satisfactory and are hereby accepted this \_\_\_\_\_ day of \_\_\_\_\_, 2023.

Customer Signature: \_\_\_\_\_ Company Representative: \_\_\_\_\_

